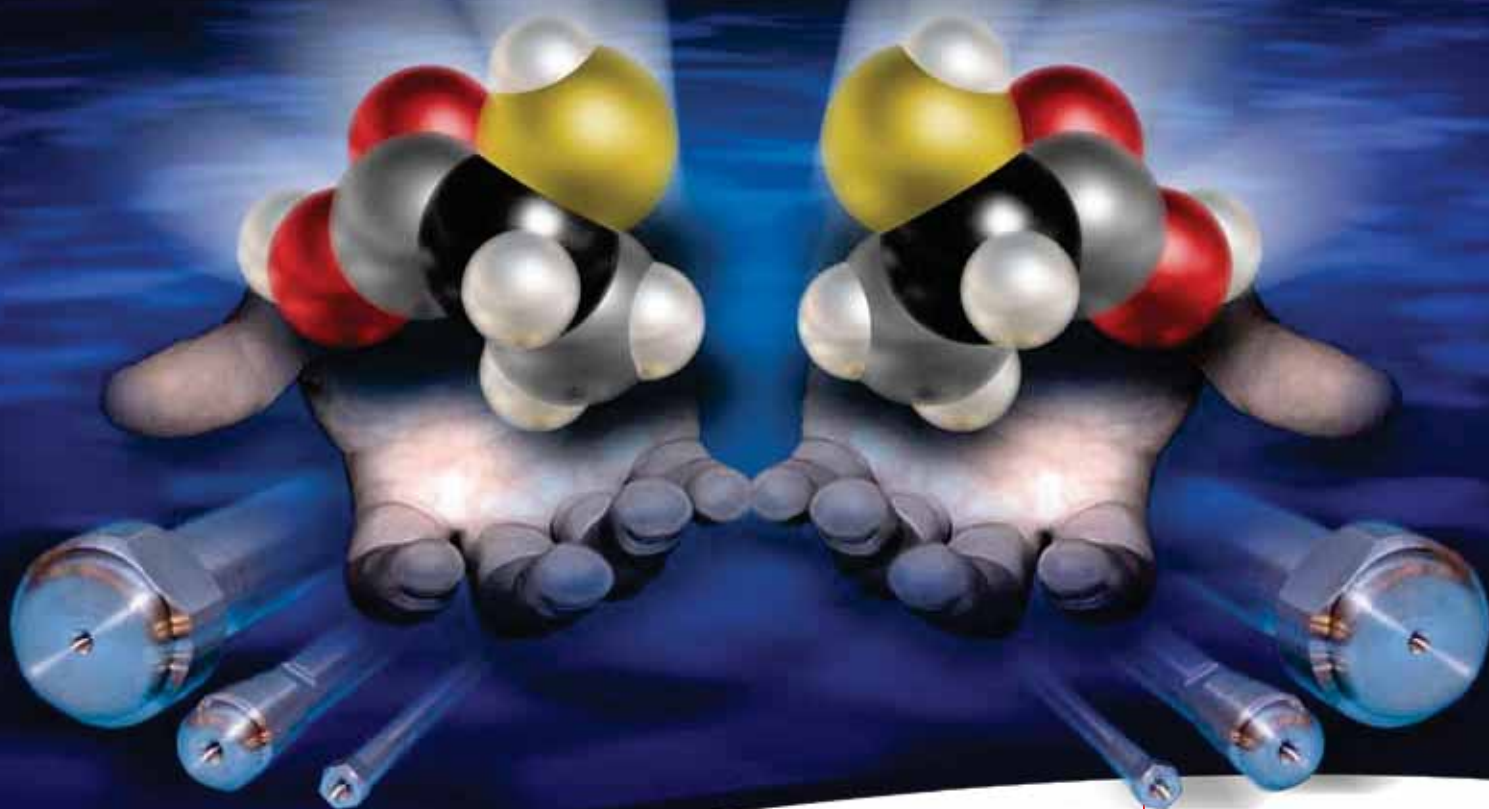


# Astec CHIROBIOTIC

Macrocyclic Glycopeptide-Based Chiral  
HPLC Phases



Columns for versatile,  
robust chiral HPLC and  
LC-MS separations

Aqueous and non-aqueous  
separations on the same  
column

No solvent or additive  
memory effects

Wide applicability, especially  
suited to polar and ionizable  
compounds

Predictable scale-up from  
analytical to prep



# Astec CHIROBIOTIC

## Versatile Chiral HPLC and LC-MS Separations of Polar, Ionizable and Neutral Compounds

Astec CHIROBIOTIC™ CSPs (chiral stationary phases) interact with polar, ionizable and neutral analytes via multiple molecular interactions. This versatility means that the same Astec CHIROBIOTIC column can be successfully used in a variety of mobile phases, a significant benefit over CSPs that operate only in a single mode, normal or reversed-phase, for example, and must be dedicated to those mobile phase systems. However, the most interesting feature of Astec CHIROBIOTIC CSPs is the presence of ionic interactions, which allows them to be used in polar ionic and reversed-phase modes for sensitive LC-MS operation.

### Key application areas

- Drug Discovery – High enantioselectivity, fast screening protocols, scalability to prep, reproducibility for reliable methods, polar and non-polar analytes
- Organic Synthesis – Compatible with all HPLC solvents to optimize sample solubility, fully scalable to prep
- Bioanalytical, Drug Metabolism – High throughput, MS-compatibility, aqueous samples, short run times, rugged columns
- Amino Acid and Peptide Analysis – Resolves underivatized natural and synthetic chiral amino acids and peptides, different selectivity and higher preparative capacity than C18 for achiral amino acids

### What is the Astec CHIROBIOTIC family?

Developed originally by Advanced Separations Technologies (Astec), the Astec CHIROBIOTIC family comprises highly enantioselective CSPs based on macrocyclic glycopeptides that have been bonded through multiple covalent linkages to high purity silica particles. Astec CHIROBIOTIC CSPs offer flexibility in choice of mobile phase conditions, both aqueous and non-aqueous, and are ideal for analytical and preparative separations of neutral, polar and ionic compounds.

### How do Astec CHIROBIOTIC CSPs separate enantiomers?

Astec CHIROBIOTIC CSPs offer six different types of molecular interactions: ionic, H-bond,  $\pi$ - $\pi$ , dipole, hydrophobic, and steric. They also possess multiple inclusion sites that influence selectivity based on the molecular shape of the analyte. The optimization of enantiomer resolution is achieved by changing the mobile phase to leverage the types and relative strengths of the various interactions.

### What makes Astec CHIROBIOTIC CSPs unique?

The bonded macrocyclic glycopeptide itself (Figure 1), in terms of its morphology, molecular composition, and multiple covalent linkages to the silica surface, is what makes Astec CHIROBIOTIC CSPs unique and gives them significant and valuable benefits over other CSPs. The truly differentiating feature of Astec CHIROBIOTIC CSPs is the presence of ionic interactions. These interactions are unique to Astec CHIROBIOTIC CSPs and are responsible in large part for their desirable retention characteristics toward polar and ionizable analytes in aqueous and non-aqueous solvents.

### How do the Astec CHIROBIOTIC CSPs differ?

The various Astec CHIROBIOTIC phases share the benefits of robustness, flexibility in mobile phase options, ionic interactions, compatibility with polar compounds and LC-MS, and preparative scalability. However, Astec CHIROBIOTIC CSPs differ in selectivity, primarily because of their differing number and types of interaction sites, and the number, type and accessibility of ionic sites in the bonded macrocyclic glycopeptide.

### The Astec CHIROBIOTIC CSP Family

Astec CHIROBIOTIC CSPs are based on 5, 10 or 16  $\mu$ m, high-purity, porous silica gel. They differ in the nature of the bonded macrocyclic glycopeptide and resulting enantioselectivity.

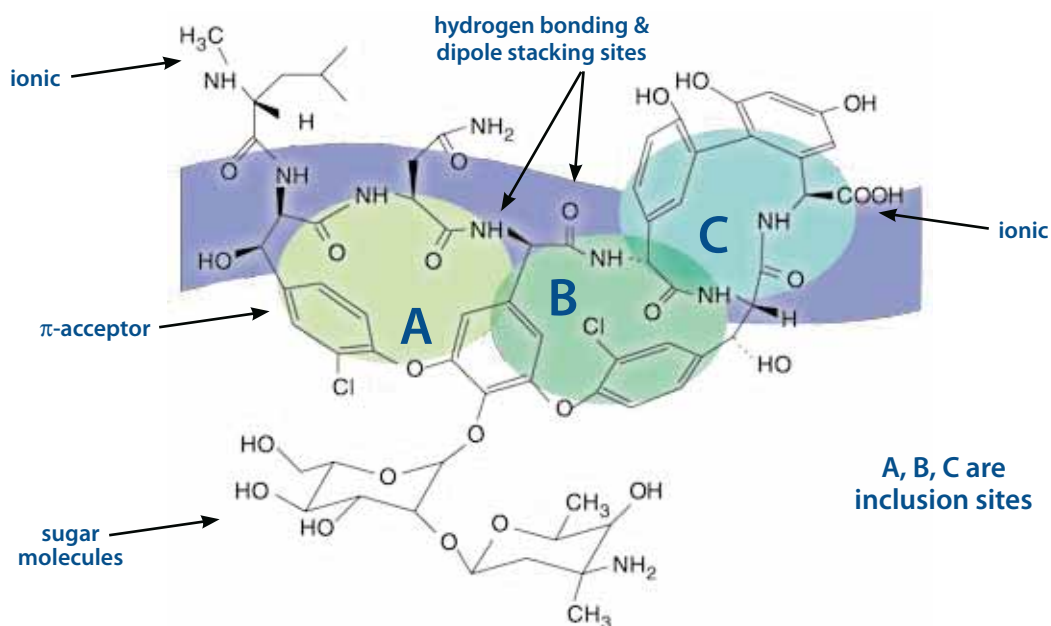
\*Astec CHIROBIOTIC V and T differ from V2 and T2, respectively, in their bonding chemistry that gives them different selectivity and preparative capacity for certain classes of analytes.

- Astec CHIROBIOTIC V and V2\* – Vancomycin
- Astec CHIROBIOTIC T and T2\* – Teicoplanin
- Astec CHIROBIOTIC R – Ristocetin
- Astec CHIROBIOTIC TAG – Teicoplanin Aglycone

## Key features of Astec CHIROBIOTIC CSPs:

- Aqueous and non-aqueous separations on the same column – Astec CHIROBIOTIC CSPs have H-bond, ionic, dispersive,  $\pi$ - $\pi$ , dipole stacking, steric, and inclusion mechanisms, usually multiple types of interactions per analyte.
- Wide applicability – Applications cover a very broad range of compound classes, with the different Astec CHIROBIOTIC CSPs showing complementary selectivity.
- LC-MS compatibility – The wide choice of mobile phases makes Astec CHIROBIOTIC CSPs ideal for LC-MS, where analyte ionization and detection sensitivity are of critical concern.
- No solvent or additive memory effect – The same Astec CHIROBIOTIC column can be used alternately in polar, reversed-phase and normal phase solvents without damage, unlike cellulosic and amylosic phases that require dedicated operation.
- Robust columns with long lifetimes – Each macrocyclic glycopeptide molecule is linked to the silica surface via four or five covalent bonds for exceptional stability and long column life. They are designed to withstand high pressure and flow rates, as well as rapid changes in mobile phase conditions.
- Solvent choices maximize sample solubility – Astec CHIROBIOTIC CSPs operate in highly-aqueous and non-aqueous polar mobile phases for polar compound solubility. They also operate in normal phase mobile phases to maximize solubility of non-polar compounds. Astec CHIROBIOTIC CSPs are compatible with all organic solvents.
- Excellent preparative scalability and capacity – From narrowbore to prep, separations on Astec CHIROBIOTIC are fully scalable, even with polar analytes. By relying on primarily aqueous eluents, the use and disposal of toxic organic solvents are eliminated. Additionally, preparative methods in the non-aqueous polar ionic mode are just as easy to process as normal phase solvents.
- Fast kinetics for speed and efficiency – The kinetics of the molecular interactions between the analyte and the Astec CHIROBIOTIC CSP are fast, providing efficient separations and relatively short retention times.
- Orthogonal selectivity to other CSPs – The six Astec CHIROBIOTIC CSPs are different from each other, and from other types of CSPs to offer choices in enantioselectivity, like reversal of elution order.

Figure 1. Proposed Structure of Vancomycin-based Astec CHIROBIOTIC V and V2



G004323



# Incorporating Astec CHIROBIOTIC CSPs into Your Chiral Column Screening Protocol

We recommend that you incorporate Astec CHIROBIOTIC into your routine screening protocol. Experience has shown that one or more of the Astec CHIROBIOTIC CSPs, particularly V2, T and TAG, will perform the majority of chiral separations. Even if other CSPs give adequate resolution, an Astec CHIROBIOTIC CSP may allow use of mobile phases that are better suited to your sample and detection method, or the Astec CHIROBIOTIC method may be faster, more efficient, or more robust. An Astec CHIROBIOTIC method may also have advantages from a preparative standpoint in terms of solvent selection and sample capacity.

For developing a new chiral HPLC method, we have created and use routinely in our laboratories a simple and rapid chiral column screening protocol (Table 1). It is important to keep in mind that

a single Astec CHIROBIOTIC column possesses multiple types of molecular interactions that are different in each of the four distinct modes. The same column can be exposed to all of the conditions outlined in the screening protocol shown in Table 1 without any change or loss of performance. This versatility is just one advantage that Astec CHIROBIOTIC CSPs have over other CSPs.

The four Astec CHIROBIOTIC CSPs we recommend in the screening protocol are available in 25 cm or 10 cm column kits. Also, you can further expand the screening field by incorporating Astec CYCLOBOND™ bonded cyclodextrin and Astec P-CAP™ chiral polymer CSPs into your screening protocol to accommodate other types of compounds not covered by the routine screen.

**Table 1. The Astec CHIROBIOTIC Screening Protocol**

columns: Astec CHIROBIOTIC V2, T, R, and TAG  
procedure: Method development follows a simple strategy that tests polar ionic, polar organic, reversed-phase, and normal phase modes.

Separation Mode	Description	Types of Compound	Screening Mobile Phase	Parameters to Optimize
Polar Ionic	Polar organic solvents (CH <sub>3</sub> OH or CH <sub>3</sub> CN) containing small amounts of acid and base or salt	Acids, Bases, Zwitterions	(100:0.1:0.1, v:v:v) CH <sub>3</sub> OH:Acetic Acid: Triethylamine	Change acid-base ratio, change the type of acid or base, add a volatile salt (test different ammonium salts)
Reversed-Phase	Typical RP eluents, water or buffers with CH <sub>3</sub> OH or CH <sub>3</sub> CN	Acids, Bases, Zwitterions, Neutrals	(30:70) CH <sub>3</sub> CN:20mM Ammonium Acetate, pH 4.0	Change the % and type of organic modifier, adjust pH, buffer type, and ionic strength
Polar Organic	Polar organic solvents without ionic additives	Neutrals	100% Ethanol	Use other polar organic solvents or blends
Normal Phase	Non-polar organic solvents with polar solvent modifiers	Neutrals	(30:70) Ethanol:Heptane	Increase % of polar modifier, change both solvents

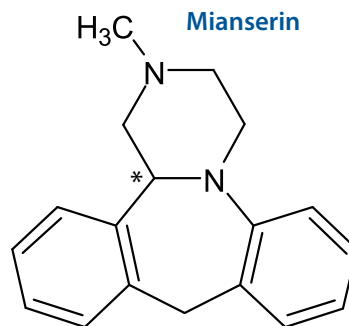
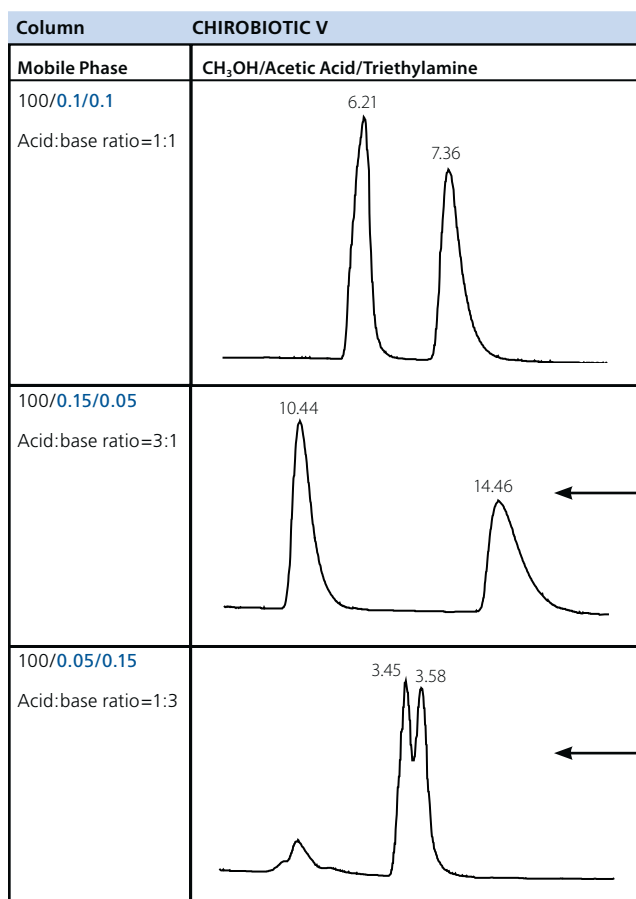
## Method Optimization: Acid-Base Ratio, Temperature, and Flow Rate in Polar Ionic Mode

Using Astec CHIROBIOTIC CSPs in the polar ionic mode has the highest probability of success. Optimizing resolution usually involves changing the contribution to retention of ionic interactions between the analytes and functional groups in the macrocyclic glycopeptide structure by:

- Changing the ratio of acid to base (Figure 2)
- Adding a soluble, volatile salt (instead of the acid and base) directly to the methanol

The acid, base, or salt that is ultimately selected is based on its compatibility, with the detection method (e.g. LC-MS), sample solubility, and whether the separation will be scaled up to preparative.

Figure 2. Demonstration of Polar Ionic Mode Mechanism: Effect of Acid:Base Ratio



**High acid:** Nitrogen on mianserin is positively charged, while -COOH group on vancomycin is negatively charged: strong ionic interaction

**High base:** Nitrogen on mianserin group is free amine, but -COOH group on vancomycin is fully charged: weak ionic interaction

# Astec CHIROBIOTIC: Ideally Suited for LC-MS of Polar, Ionizable and Neutral Compounds

Each of the various ionization sources has an optimal set of mobile phase conditions. Outside this set, ionization may be suppressed with resulting loss in sensitivity. Astec CHIROBIOTIC phases are uniquely able to operate across all mobile phase systems. CSPs that are limited to normal phase operation, like many cellulosic and amylosic CSPs, reduce the options in detection methods.

**ESI – Operate Astec CHIROBIOTIC CSPs in reversed-phase and unique polar ionic modes.**

**APCI – Operate Astec CHIROBIOTIC CSPs in polar ionic mode.**

**APPI – Operate Astec CHIROBIOTIC CSPs in normal phase mode.**

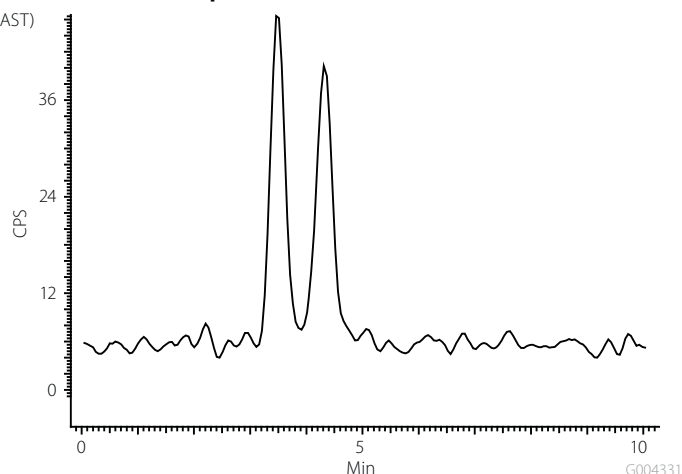
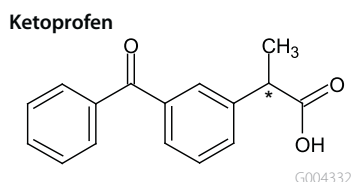
Typical polar ionic mobile phases are methanol with low concentrations (0.1 – 0.001%) of volatile salts, like ammonium acetate or ammonium formate. Figures 3 and 4 show examples of Astec CHIROBIOTIC CSPs for LC-MS in reversed-phase and polar ionic mode mobile phases, respectively.

In addition to mobile phase compatibility, the allowable high flow rates and short columns make them ideally suited to fast MS applications.

Astec CHIROBIOTIC columns can be used in conjunction with HybridSPE™-PPT plates to enhance sensitivity by completely removing endogenous proteins and phospholipids. This approach was used to resolve the enantiomers of clenbuterol on an Astec CHIROBIOTIC T column in Figure 4.

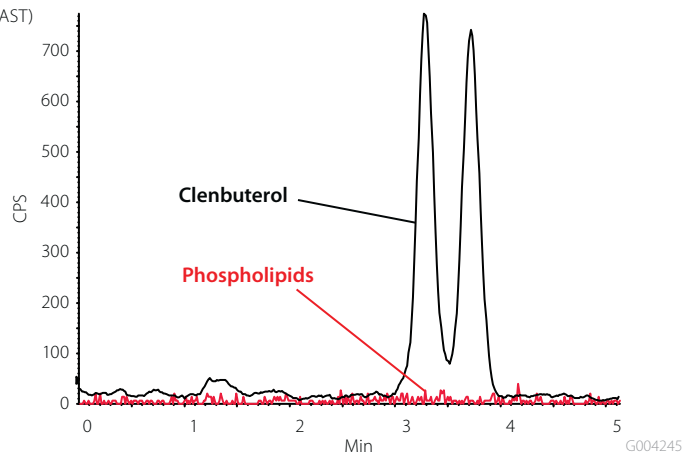
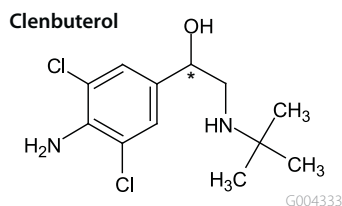
**Figure 3. ESI-MS of Ketoprofen on Astec CHIROBIOTIC R in Reversed-phase Mode**

column: Astec CHIROBIOTIC R, 15 cm x 2.1 mm, 5 µm particles (13019AST)  
mobile phase: (30:70) CH<sub>3</sub>OH:20 mM ammonium acetate, pH 5.6  
flow rate: 0.2 mL/min.  
det.: ESI(-)  
temp.: 35 °C  
analyte: Ketoprofen



**Figure 4. ESI-MS of Clenbuterol Extracted from Plasma on Astec CHIROBIOTIC T in Polar Ionic Mode**

column: Astec CHIROBIOTIC T, 10 cm x 2.1 mm, 5 µm particles (12018AST)  
mobile phase: 10 mM ammonium formate in CH<sub>3</sub>OH  
flow rate: 0.3 mL/min.  
det.: ESI(+)  
temp.: 30 °C  
analyte: Clenbuterol in rat plasma (10 ng/mL)



# Unique Polar Ionic Mode

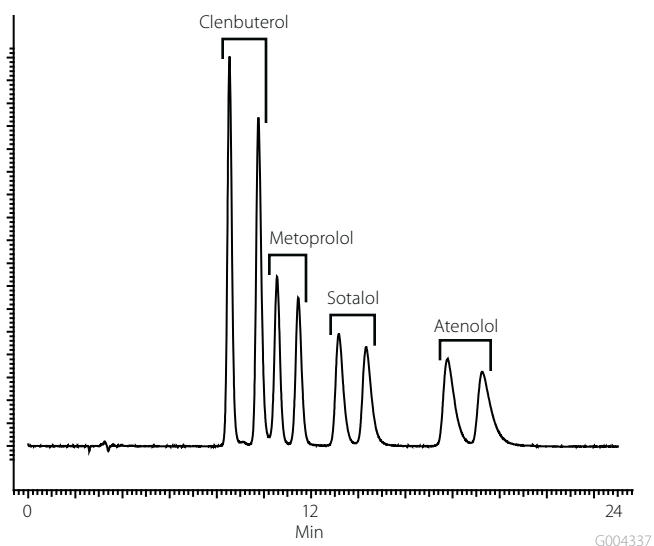
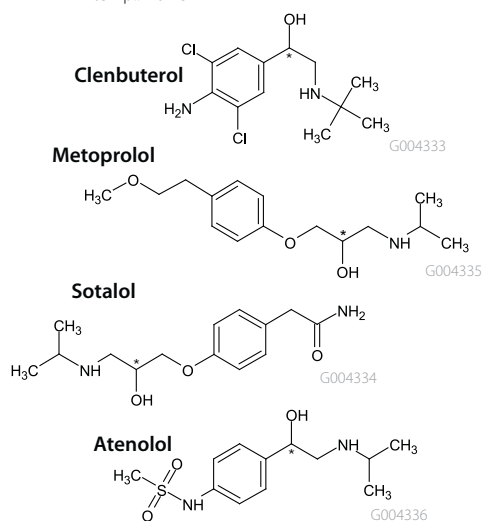
A valuable feature of Astec CHIROBIOTIC CSPs, the novel and very versatile polar ionic mode is popular because its mobile phases are polar organic solvents containing volatile additives that are ideally suited for preparative and LC-MS applications. An

example is shown in Figure 5. Additionally, compared to normal phase separations, the polar ionic mode has speed, efficiency, and sensitivity advantages, all valuable assets for LC-MS.



**Figure 5. Beta-Receptors on Astec CHIROBIOTIC T in Polar Ionic Mode**

column: Astec CHIROBIOTIC T, 25 cm x 4.6 mm, 5  $\mu$ m particles (12024AST)  
mobile phase: 15 mM ammonium formate in  $\text{CH}_3\text{OH}$   
flow rate: 1 mL/min.  
det.: UV at 220 nm  
temp.: 25  $^\circ\text{C}$



# Multi-modal Interactions Permit Use in Aqueous and Non-aqueous Solvents

All Astec CHIROBIOTIC CSPs possess multiple interaction sites on the same column. Changing the mobile phase affects the relative strength of specific types of interactions. The power and flexibility of multi-modal Astec CHIROBIOTIC CSPs are demonstrated in Figures 6 through 10. The vancomycin-based Astec CHIROBIOTIC CSPs were used successfully in four different modes.

## Polar Ionic Mode

A valuable feature of Astec CHIROBIOTIC, the novel and very versatile polar ionic mode mobile phase system is desirable because of its high volatility and beneficial ionization effect for LC-MS (Figure 6).

## Reversed-phase Mode

Also highly suitable for LC-MS and polar analytes, reversed-phase (RP) is a mode familiar to all chromatographers. Astec CHIROBIOTIC CSPs have RP character and can be used in a wide range of buffers and solvents (Figure 7).

## Polar Organic Mode

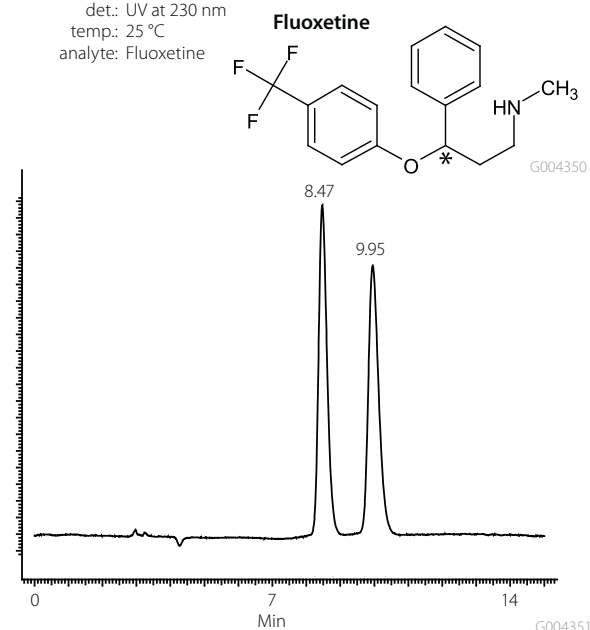
Enantiomers of polar neutral analytes have been successfully separated on Astec CHIROBIOTIC in the polar organic mode where the mobile phase is typically a polar organic solvent or solvent blend. Reaction mixtures, even in pyridine, can be run on Astec CHIROBIOTIC in this mode (Figure 8).

## Normal Phase Mode

Normal phase chiral separations are desirable to maintain solubility of hydrophobic compounds and when analyzing reaction mixtures in non-polar organic solvents. Astec CHIROBIOTIC CSPs have the flexibility to operate in normal phase mode. The same column can be used with normal phase and polar/aqueous solvents and additives without memory effects (Figure 9).

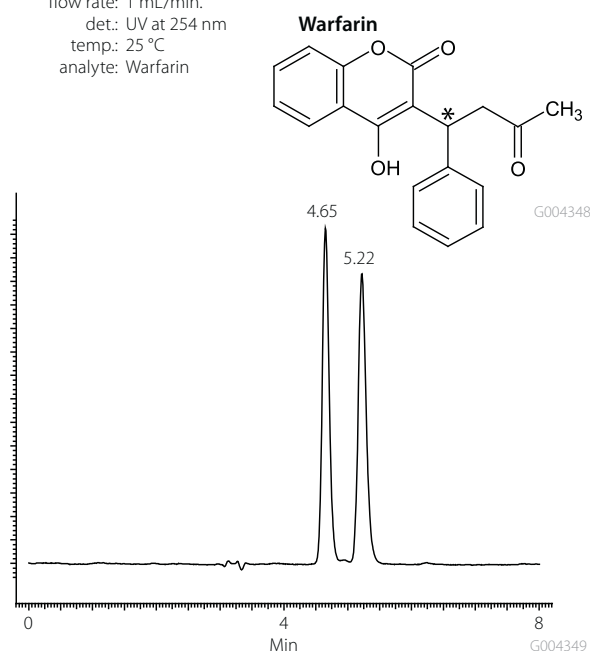
**Figure 6. Polar Ionic Mode**

column: Astec CHIROBIOTIC V2, 25 cm x 4.6 mm, 5  $\mu$ m particles (15024AST)  
mobile phase: 15 mM ammonium formate in CH<sub>3</sub>OH  
flow rate: 1 mL/min.  
det.: UV at 230 nm  
temp.: 25  $^{\circ}$ C  
analyte: Fluoxetine



**Figure 7. Reversed-phase Mode**

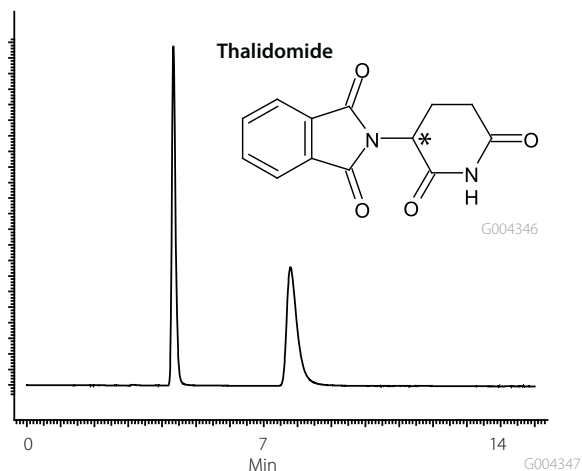
column: Astec CHIROBIOTIC V, 25 cm x 4.6 mm, 5  $\mu$ m particles (11024AST)  
mobile phase: (30:70) CH<sub>3</sub>CN:5 mM ammonium acetate, pH 4.1  
flow rate: 1 mL/min.  
det.: UV at 254 nm  
temp.: 25  $^{\circ}$ C  
analyte: Warfarin





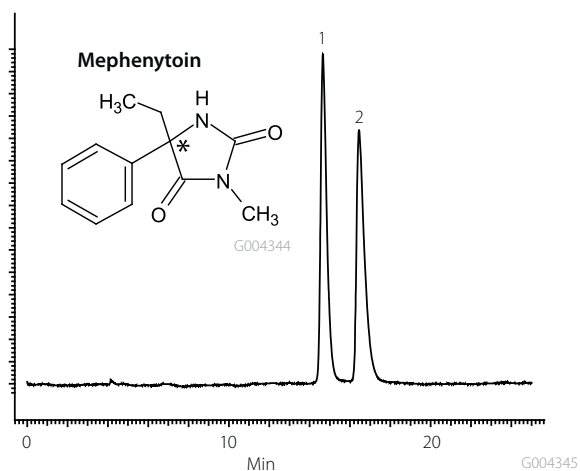
**Figure 8. Polar Organic Mode**

column: Astec CHIROBIOTIC V2, 25 cm x 4.6 mm, 5  $\mu$ m particles (15024AST)  
mobile phase: CH<sub>3</sub>OH  
flow rate: 1 mL/min.  
det.: UV at 230 nm  
temp.: 25  $^{\circ}$ C  
analyte: Thalidomide



**Figure 9. Normal Phase Mode**

column: Astec CHIROBIOTIC V, 25 cm x 4.6 mm, 5  $\mu$ m particles (11024AST)  
mobile phase: (95:5) hexane:ethanol  
flow rate: 1 mL/min.  
det.: UV at 205 nm  
temp.: 25  $^{\circ}$ C  
analyte: Mephenytoin



## Preparative Applications Using Astec CHIROBIOTIC CSPs

- Scalability across all Astec CHIROBIOTIC particle sizes
- Low retention times give high throughput

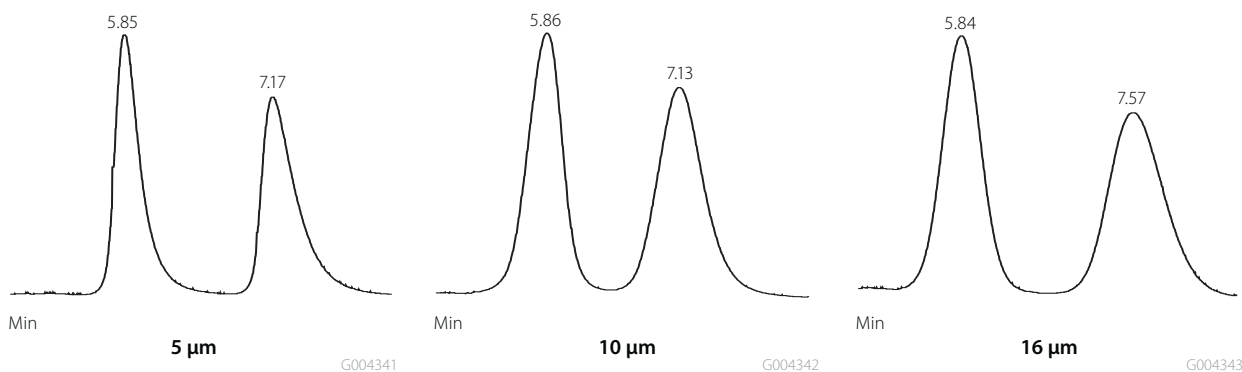
Astec CHIROBIOTIC columns can be used in all preparative HPLC techniques, including elution and recycle chromatography, mass-directed prep, SFC, and simulated moving bed (SMB). Scale-up is highly predictable because the same bonded phase chemistry is employed across all particle sizes. Multiple covalent bonds attach the Astec CHIROBIOTIC macrocyclic glycopeptides to the silica surface, meaning no CSP ligand will contaminate the product.

Preparative separations on Astec CHIROBIOTIC columns often have speed and efficiency benefits over other CSPs. In terms of loading capacity, a 25 cm x 21.2 mm column has medium to high loadings, from a few mg to over 300 mg per injection.

Preparative separations on Astec CHIROBIOTIC are reproducible and scalable. Figure 10 shows the separation of phenylalanine isomers in reversed-phase mode on columns packed with 5, 10, and 16  $\mu$ m particles of Astec CHIROBIOTIC T.

**Figure 10. Scalability Across Astec CHIROBIOTIC CSP Particle Sizes**

column: Astec CHIROBIOTIC T, 25 cm x 4.6 mm  
mobile phase: (50:50) ethanol:water  
flow rate: 0.9 mL/min.  
det.: UV at 220 nm





## Preparative Applications (contd.)

A significant advantage of Astec CHIROBIOTIC for preparative applications is the fact that the mobile phase can be chosen to optimize sample solubility – a critical preparative consideration. The examples here show preparative Astec CHIROBIOTIC separations in three different mobile phase systems.

### Preparative Reversed-phase and Polar Ionic Modes

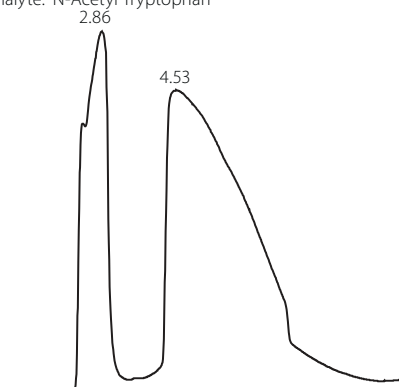
Preparative separations in reversed-phase and polar ionic mode solvents have benefits over normal phase preparative separations in terms of solvent safety and waste disposal costs. Figure 11 shows the use of Astec CHIROBIOTIC TAG in a preparative separation in polar ionic mode.

### Preparative Polar Organic Mode

Figure 12 shows the analytical and preparative separations of thalidomide enantiomers on Astec CHIROBIOTIC T. The analytical scale gave an  $\alpha$  value of 3.35 in 100% methanol and a retention time under 10 minutes. However, since thalidomide is fairly insoluble in pure methanol, it was possible to add 20% dioxane to the mobile phase to increase solubility 3.5-fold while still achieving the necessary separation.

### Figure 11. Preparative Separation on Astec CHIROBIOTIC TAG in Polar Ionic Mode

column: Astec CHIROBIOTIC TAG, 25 cm x 21.2 mm, 5  $\mu$ m particles (14044AST)  
mobile phase: 0.1% ammonium acetate in CH<sub>3</sub>OH  
flow rate: 35 mL/min.  
det.: UV at 300 nm  
throughput: 20 mg/g CSP/hr.  
load: 200 mg in 6 mL  
analyte: N-Acetyl Tryptophan

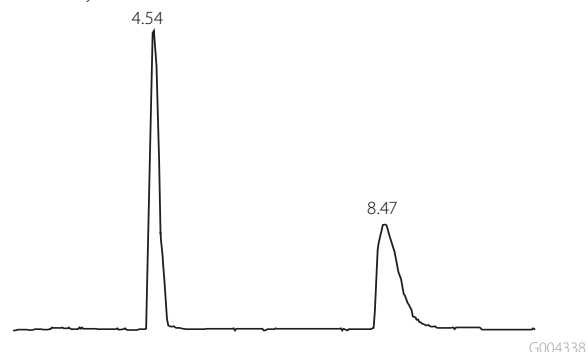


G004340

### Figure 12. Sample Solubility Considerations in Preparative

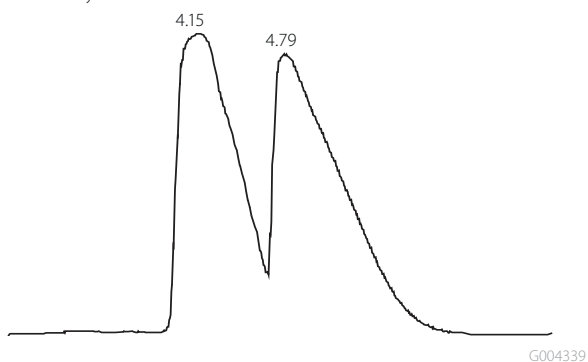
#### Analytical Scale

column: Astec CHIROBIOTIC V, 25 cm x 4.6 mm, 5  $\mu$ m particles (11024AST)  
mobile phase: CH<sub>3</sub>OH  
det.: UV at 293 nm  
flow rate: 1 mL/min.  
analyte: Thalidomide



#### Prep Scale

column: Astec CHIROBIOTIC V, 25 cm x 21.2 mm, 5  $\mu$ m particles (11044AST)  
mobile phase: (80:20) CH<sub>3</sub>OH:dioxane  
det.: UV at 313 nm  
flow rate: 20 mL/min.  
load: 70 mg in 12 mL  
analyte: Thalidomide



G004339

### Chiral Services: Column Screening and Small-Scale Purification

Consult Supelco to obtain a quotation for our expert services for chiral column screening (HPLC and GC), method development and optimization, as well as isolation of up to 10 grams of purified enantiomer.

The complete listing of our chiral HPLC and GC columns can be found at [sigma-aldrich.com/chiral](http://sigma-aldrich.com/chiral), our corporate chiral web portal, where you can view our other products for chiral chemistry, like chiral catalysts, building blocks, mobile phase additives, derivatization reagents and more.



## Astec CHIROBIOTIC V and V2

<b>Bonded Macrocylic Glycopeptide:</b>	Vancomycin
<b>Chiral Centers:</b>	18
<b>Sugar Moieties:</b>	2
<b>Inclusion Cavities:</b>	3

Separates a wide variety of secondary and tertiary amines in the polar ionic mode. Have many of the separation characteristics of protein-based stationary phases but with exceptional stability and much higher sample capacity. Astec CHIROBIOTIC V2 and V differ in the chemistry used to bond the glycopeptide to the silica, which gives them differences in selectivity.

## Astec CHIROBIOTIC T and T2

<b>Bonded Macrocylic Glycopeptide:</b>	Teicoplanin
<b>Chiral Centers:</b>	23
<b>Sugar Moieties:</b>	3
<b>Inclusion Cavities:</b>	4

These CSPs have resolved all of the known beta-blockers and dihydrocoumarins and many other compound classes. Generally reproduces chiral crown ether or ligand-exchange for amino acid separations. Astec CHIROBIOTIC T2 and T differ in the chemistry used to bond the glycopeptide to the silica, which gives them differences in selectivity.

## Astec CHIROBIOTIC TAG

<b>Bonded Macrocylic Glycopeptide:</b>	Teicoplanin Aglycone
<b>Chiral Centers:</b>	8
<b>Sugar Moieties:</b>	0
<b>Inclusion Cavities:</b>	4

The removal of the three sugar moieties enhances resolution of many of the amino acids (alpha, beta, gamma, and cyclic). Astec CHIROBIOTIC TAG has shown remarkable selectivity for sulfur-containing molecules, such as sulfoxides and the amino acids methionine, histidine, and cysteine. Neutral molecules, like oxazolidinones, hydantoin, and diazepines, have shown enhanced resolution and, more remarkably, in single-solvent systems like methanol, ethanol, and acetonitrile. Some acidic molecules have also shown increased selectivity.

## Astec CHIROBIOTIC R

<b>Bonded Macrocylic Glycopeptide:</b>	Ristocetin A
<b>Chiral Centers:</b>	38
<b>Sugar Moieties:</b>	6
<b>Inclusion Cavities:</b>	4

The presence of amines in the ristocetin structure makes it a good choice when screening acidic compounds.

# Astec CHIROBIOTIC Product Listing

For more information and to review our complete offering of Astec CHIROBIOTIC columns, please visit [sigma-aldrich.com/chiral](http://sigma-aldrich.com/chiral)

## Method Development Kits

ID (mm)	Length (cm)	Cat. No.
4.6	10	<b>10300AST</b> - One each of Astec CHIROBIOTIC V2, T, TAG and R
4.6	25	<b>10305AST</b> - One each of Astec CHIROBIOTIC V2, T, TAG and R

Astec CHIROBIOTIC Columns*		V	V2	T	T2	TAG	R
ID (mm)	Length (cm)	Cat. No.	Cat. No.	Cat. No.	Cat. No.	Cat. No.	Cat. No.
<b>5 µm</b>							
2.1	15	<b>11019AST</b>	<b>15019AST</b>	<b>12019AST</b>	<b>16019AST</b>	<b>14019AST</b>	<b>13019AST</b>
2.1	25	<b>11020AST</b>	<b>15020AST</b>	<b>12020AST</b>	<b>16020AST</b>	<b>14020AST</b>	<b>13020AST</b>
4.6	5	<b>11021AST</b>	<b>15021AST</b>	<b>12021AST</b>	<b>16021AST</b>	<b>14021AST</b>	<b>13021AST</b>
4.6	10	<b>11022AST</b>	<b>15022AST</b>	<b>12022AST</b>	<b>16022AST</b>	<b>14022AST</b>	<b>13022AST</b>
4.6	15	<b>11023AST</b>	<b>15023AST</b>	<b>12023AST</b>	<b>16023AST</b>	<b>14023AST</b>	<b>13023AST</b>
4.6	25	<b>11024AST</b>	<b>15024AST</b>	<b>12024AST</b>	<b>16024AST</b>	<b>14024AST</b>	<b>13024AST</b>
10	25	<b>11034AST</b>	<b>15034AST</b>	<b>12034AST</b>	<b>16034AST</b>	<b>14034AST</b>	<b>13034AST</b>
10	50	<b>11036AST</b>	<b>15036AST</b>	<b>12036AST</b>	<b>16036AST</b>	<b>14036AST</b>	<b>13036AST</b>
21.2	25	<b>11044AST</b>	<b>15044AST</b>	<b>12044AST</b>	<b>16044AST</b>	<b>14044AST</b>	<b>13044AST</b>
<b>10 µm</b>							
4.6	25	<b>11124AST</b>	<b>15124AST</b>	<b>12124AST</b>	<b>16124AST</b>	<b>14124AST</b>	<b>13124AST</b>

\*Other column dimensions, including guard columns and preparative dimensions, are found on our website or by inquiring to [techservice@sial.com](mailto:techservice@sial.com).

## TRADEMARKS:

Astec CHIROBIOTIC, CYCLOBOND, HybridSPE, P-CAP – Sigma-Aldrich Biotechnology LP

## Sigma-Aldrich® Worldwide Offices

### Argentina

Free Tel: 0810 888 7446  
Tel: (+54) 11 4556 1472  
Fax: (+54) 11 4552 1698

### Australia

Free Tel: 1800 800 097  
Free Fax: 1800 800 096  
Tel: (+61) 2 9841 0555  
Fax: (+61) 2 9841 0500

### Austria

Tel: (+43) 1 605 81 10  
Fax: (+43) 1 605 81 20

### Belgium

Free Tel: 0800 14747  
Free Fax: 0800 14745  
Tel: (+32) 3 899 13 01  
Fax: (+32) 3 899 13 11

### Brazil

Free Tel: 0800 701 7425  
Tel: (+55) 11 3732 3100  
Fax: (+55) 11 5522 9895

### Canada

Free Tel: 1800 565 1400  
Free Fax: 1800 265 3858  
Tel: (+1) 905 829 9500  
Fax: (+1) 905 829 9292

### Chile

Tel: (+56) 2 495 7395  
Fax: (+56) 2 495 7396

### China

Free Tel: 800 819 3336  
Tel: (+86) 21 6141 5566  
Fax: (+86) 21 6141 5567

### Czech Republic

Tel: (+420) 246 003 200  
Fax: (+420) 246 003 291

### Denmark

Tel: (+45) 43 56 59 00  
Fax: (+45) 43 56 59 05

### Finland

Tel: (+358) 9 350 9250  
Fax: (+358) 9 350 92555

### France

Free Tel: 0800 211 408  
Free Fax: 0800 031 052  
Tel: (+33) 474 82 28 88  
Fax: (+33) 474 95 68 08

### Germany

Free Tel: 0800 51 55 000  
Free Fax: 0800 64 90 000  
Tel: (+49) 89 6513 0  
Fax: (+49) 89 6513 1160

### Hungary

Ingyenes telefonszám: 06 80 355 355  
Ingyenes fax szám: 06 80 344 344  
Tel: (+36) 1 235 9063  
Fax: (+36) 1 269 6470

### India

#### Telephone

Bangalore: (+91) 80 6621 9400  
New Delhi: (+91) 11 4358 8000  
Mumbai: (+91) 22 2570 2364  
Hyderabad: (+91) 40 4015 5488  
Kolkata: (+91) 33 4013 8003

#### Fax

Bangalore: (+91) 80 6621 9550  
New Delhi: (+91) 11 4358 8001  
Mumbai: (+91) 22 4087 2364  
Hyderabad: (+91) 40 4015 5488  
Kolkata: (+91) 33 4013 8000

### Ireland

Free Tel: 1800 200 888  
Free Fax: 1800 600 222  
Tel: (+353) 402 20370  
Fax: (+353) 402 20375

### Israel

Free Tel: 1 800 70 2222  
Tel: (+972) 8 948 4100  
Fax: (+972) 8 948 4200

### Italy

Free Tel: 800 827 018  
Tel: (+39) 02 3341 7310  
Fax: (+39) 02 3801 0737

### Japan

Tel: (+81) 3 5796 7300  
Fax: (+81) 3 5796 7315

### Korea

Free Tel: (+82) 80 023 7111  
Free Fax: (+82) 80 023 8111  
Tel: (+82) 31 329 9000  
Fax: (+82) 31 329 9090

### Malaysia

Tel: (+60) 3 5635 3321  
Fax: (+60) 3 5635 4116

### Mexico

Free Tel: 01 800 007 5300  
Free Fax: 01 800 712 9920  
Tel: (+52) 722 276 1600  
Fax: (+52) 722 276 1601

### The Netherlands

Free Tel: 0800 022 9088  
Free Fax: 0800 022 9089  
Tel: (+31) 78 620 5411  
Fax: (+31) 78 620 5421

### New Zealand

Free Tel: 0800 936 666  
Free Fax: 0800 937 777  
Tel: (+61) 2 9841 0555  
Fax: (+61) 2 9841 0500

### Norway

Tel: (+47) 23 17 60 00  
Fax: (+47) 23 17 60 10

### Poland

Tel: (+48) 61 829 01 00  
Fax: (+48) 61 829 01 20

### Portugal

Free Tel: 800 202 180  
Free Fax: 800 202 178  
Tel: (+351) 21 924 2555  
Fax: (+351) 21 924 2610

### Russia

Tel: (+7) 495 621 5828  
Fax: (+7) 495 621 6037

### Singapore

Tel: (+65) 6779 1200  
Fax: (+65) 6779 1822

### Slovakia

Tel: (+421) 255 571 562  
Fax: (+421) 255 571 564

### South Africa

Free Tel: 0800 1100 75  
Free Fax: 0800 1100 79  
Tel: (+27) 11 979 1188  
Fax: (+27) 11 979 1119

### Spain

Free Tel: 900 101 376  
Free Fax: 900 102 028  
Tel: (+34) 91 661 99 77  
Fax: (+34) 91 661 96 42

### Sweden

Tel: (+46) 8 742 4200  
Fax: (+46) 8 742 4243

### Switzerland

Free Tel: 0800 80 00 80  
Free Fax: 0800 80 00 81  
Tel: (+41) 81 755 2828  
Fax: (+41) 81 755 2815

### United Kingdom

Free Tel: 0800 717 181  
Free Fax: 0800 378 785  
Tel: (+44) 1747 833 000  
Fax: (+44) 1747 833 313

### United States

Toll-Free: 800 325 3010  
Toll-Free Fax: 800 325 5052  
Tel: (+1) 314 771 5765  
Fax: (+1) 314 771 5757

### Vietnam

Tel: (+84) 3516 2810  
Fax: (+84) 6258 4238

### Internet

[sigma-aldrich.com](http://sigma-aldrich.com)

Enabling Science to  
Improve the Quality of Life

Order/Customer Service (800) 325-3010 • Fax (800) 325-5052  
Technical Service (800) 325-5832 • [sigma-aldrich.com/techservice](http://sigma-aldrich.com/techservice)  
Development/Custom Manufacturing Inquiries **SAFC**® (800) 244-1173  
Safety-related Information [sigma-aldrich.com/safetycenter](http://sigma-aldrich.com/safetycenter)

World Headquarters  
3050 Spruce St.  
St. Louis, MO 63103  
(314) 771-5765  
[sigma-aldrich.com](http://sigma-aldrich.com)



©2010 Sigma-Aldrich Co. All rights reserved. SIGMA, SAFC, SIGMA-ALDRICH, ALDRICH, FLUKA, and SUPELCO are trademarks belonging to Sigma-Aldrich Co. and its affiliate Sigma-Aldrich Biotechnology, L.P. Sigma brand products are sold through Sigma-Aldrich, Inc. Sigma-Aldrich, Inc. warrants that its products conform to the information contained in this and other Sigma-Aldrich publications. Purchaser must determine the suitability of the product(s) for their particular use. Additional terms and conditions may apply. Please see reverse side of the invoice or packing slip.

KWY  
T408131A