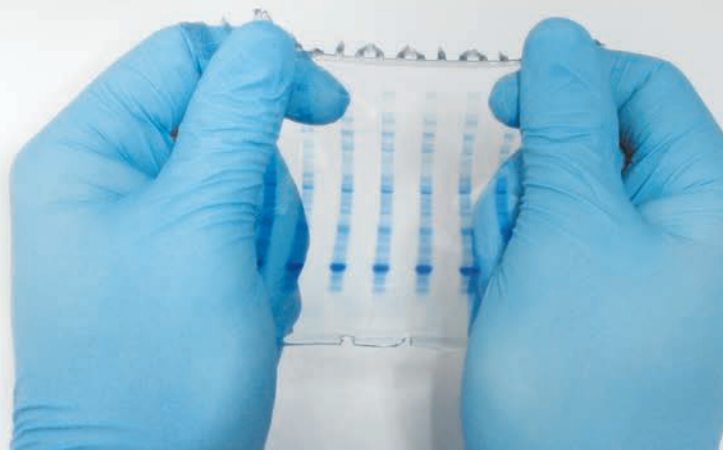


TRUPAGE™ PRECAST GELS

Get a Better Grip

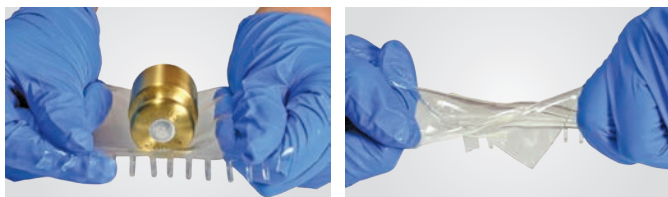


TruPAGE

SDS-PAGE protein gels are sometimes difficult to handle and break easily during experimental handling. This can result in researchers wasting valuable sample (and time) piecing together broken gels which is not efficient, reproducible, nor reliable.

TruPAGE SDS-PAGE precast gels are tear-resistant to reduce handling failures that commonly occur during gel electrophoresis and downstream processing. TruPAGE offers this enhanced durability **AND** continues to provide the protein resolution that you expect.

Tough, Tested, Tru



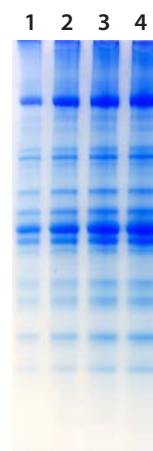
Features and Benefits

- **Durable** – resists tearing to stand up to experimental handling
- **High-Performance** – extended full length resolving gels to provide improved protein resolution for better blots
- **Excellent Compatibility** – compatible with popular gel running equipment
- **Hassle-Free** – no comb to pull, no tape to remove
- **Long Shelf Life** – up to 24 months stability from the date of manufacture
- **Fast** – run times as low as 30 minutes
- **Great Value** – gels and buffers offer a cost-saving alternative without sacrificing performance and experimental integrity

Innovative Stacking Technology

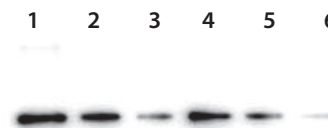
TruPAGE precast gels have proprietary stacking technology resulting in improved protein resolution and crisp bands. TruPAGE gels have large well capacity (20–35 μ L).

(A)



Chicken Muscle Extract resolved with TruPAGE and stained with InstantBlue™. Lanes: 1) 10 μ g, 2) 20 μ g, 3) 30 μ g, 4) 40 μ g.

(B)



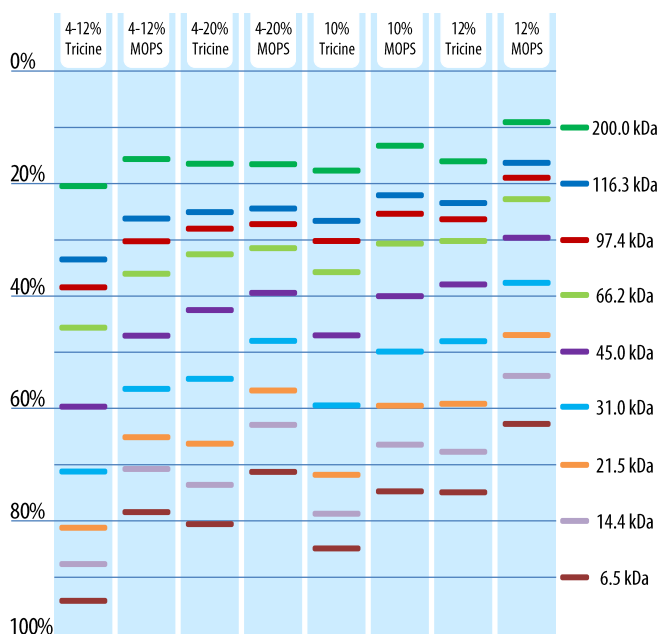
Anti-Flag Western Blot using TruPAGE to resolve samples. Lanes: 1) 1 μ g HeLa Lysate + 100 ng Carboxy-terminal FLAG-BAP (C-FLAG-BAP), 2) 0.5 μ g HeLa Lysate + 50 ng C-FLAG-BAP, 3) 0.25 μ g HeLa Lysate + 25 ng C-FLAG-BAP, 4) 100 ng C-FLAG-BAP, 5) 50 ng C-FLAG-BAP, 6) 25 ng C-FLAG-BAP.

SIGMA

LABCO L.L.C.

SIGMA-ALDRICH®

Migration Table



Conversion Chart

Gel Form	TruPAGE™	Equivalent to	NuPAGE®	Mini-PROTEAN TGX
10 × 10 cm	10%	→	10%	—
10 × 10 cm	12%	→	12%	—
10 × 10 cm	4–12%	→	—	—
10 × 10 cm	4–20%	→	4–12%	—
10 × 8 cm	10%	→	—	10%
10 × 8 cm	12%	→	—	12%
10 × 8 cm	4–12%	→	—	4–15%
10 × 8 cm	4–20%	→	—	4–20%
Well Volume	12-well (35 µL) 17-well (20 µL)	→	12-well (20 µL) 17-well (15 µL)	12-well (20 µL) 17-well (15 µL)

*Use specifically formulated, non-proprietary TruPAGE buffers exclusively with TruPAGE gels to ensure optimal reproducibility and consistent excellent results. TruPAGE buffer recipes are supplied online.

Cat. No.	Buffers and Reagents
PCG3001-500ML	TruPAGE SDS Running Buffer, 20x, TEA-Tricine
PCG3003-500ML	TruPAGE SDS Express Running Buffer, 20x, MOPS
PCG3005-1ML	TruPAGE DTT Sample Reducer, 10x
PCG3007-10ML	TruPAGE Running Antioxidant, 800x
PCG3009-10ML	TruPAGE LDS Sample Buffer, 4x
PCG3011-500ML	TruPAGE Transfer Buffer, 20x

Cat. No.	Product Description
PCG2001-10EA	TruPAGE Precast Gels, 10%, 10 × 10 cm, 12-well
PCG2002-10EA	TruPAGE Precast Gels, 12%, 10 × 10 cm, 12-well
PCG2003-10EA	TruPAGE Precast Gels, 4–12%, 10 × 10 cm, 12-well
PCG2004-10EA	TruPAGE Precast Gels, 4–20%, 10 × 10 cm, 12-well
PCG2005-10EA	TruPAGE Precast Gels, 10%, 10 × 10 cm, 17-well
PCG2006-10EA	TruPAGE Precast Gels, 12%, 10 × 10 cm, 17-well
PCG2007-10EA	TruPAGE Precast Gels, 4–12%, 10 × 10 cm, 17-well
PCG2008-10EA	TruPAGE Precast Gels, 4–20%, 10 × 10 cm, 17-well
PCG2009-10EA	TruPAGE Precast Gels, 10%, 10 × 8 cm, 12-well
PCG2010-10EA	TruPAGE Precast Gels, 12%, 10 × 8 cm, 12-well
PCG2011-10EA	TruPAGE Precast Gels, 4–12%, 10 × 8 cm, 12-well
PCG2012-10EA	TruPAGE Precast Gels, 4–20%, 10 × 8 cm, 12-well
PCG2013-10EA	TruPAGE Precast Gels, 10%, 10 × 8 cm, 17-well
PCG2014-10EA	TruPAGE Precast Gels, 12%, 10 × 8 cm, 17-well
PCG2015-10EA	TruPAGE Precast Gels, 4–12%, 10 × 8 cm, 17-well
PCG2016-10EA	TruPAGE Precast Gels, 4–20%, 10 × 8 cm, 17-well

Cassette Size	Gel Box Mfg.	Compatible Boxes
10 × 8 cm	Bio-Rad	Mini-Protean® II
	Bio-Rad	Mini-Protean® Tetra
	Hoefer	Hoefer® Tall Mighty Small™ (SE280)
10 × 10 cm	Life Technologies™	X-cell™ and Bolt®
	Lonza	PAGEr® Minigel Chamber

For a complete listing of gels and corresponding buffers, visit sigma.com/trupage

Enabling Science to
Improve the Quality of Life

Order/Customer Service: sigma-aldrich.com/order
 Technical Service: sigma-aldrich.com/techservice
 Development/Custom Manufacturing Inquiries: [SAFC® safcglobal@sial.com](mailto:safcglobal@sial.com)
 Safety-related Information: sigma-aldrich.com/safetycenter

World Headquarters
 3050 Spruce St.
 St. Louis, MO 63103
 (314) 771-5765
sigma-aldrich.com

©2015 Sigma-Aldrich Co. LLC. All rights reserved. SAFC, SIGMA and SIGMA-ALDRICH are trademarks of Sigma-Aldrich Co. LLC, registered in the US and other countries. TruPAGE is a trademark of Sigma-Aldrich Co. LLC. Bio-Rad and Mini-Protean are registered trademarks of Bio-Rad Laboratories, Inc. Hoefer is a registered trademark of Hoefer, Inc. PAGEr is a trademark of Lonza Group Ltd. Life Technologies is a trademark of Life Technologies. InstantBlue is a trademark of Expedon Protein Solutions. Tall Mighty Small is a trademark of Hoefer, Inc. XCell I is a trademark of Life Technologies. Sigma-Aldrich, Sigma and SAFC brand products are sold by affiliated Sigma-Aldrich distributors. Purchaser must determine the suitability of the product(s) for their particular use. Additional terms and conditions may apply. Please see product information on the Sigma-Aldrich website at www.sigmaaldrich.com and/or on the reverse side of the invoice or packing slip.

QJA
 83592
 1095