

TRUPAGE™ PRECAST GELS

Get a Better Grip

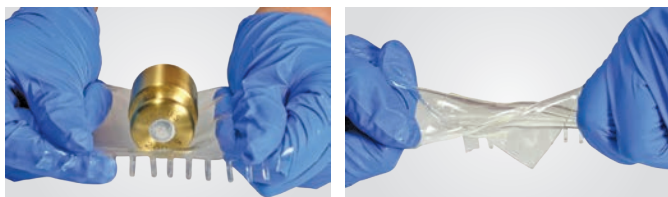


TruPAGE

SDS-PAGE protein gels are sometimes difficult to handle and break easily during experimental handling. This can result in researchers wasting valuable sample (and time) piecing together broken gels which is not efficient, reproducible, nor reliable.

TruPAGE SDS-PAGE precast gels are tear-resistant to reduce handling failures that commonly occur during gel electrophoresis and downstream processing. TruPAGE offers this enhanced durability **AND** continues to provide the protein resolution that you expect.

Tough, Tested, Tru



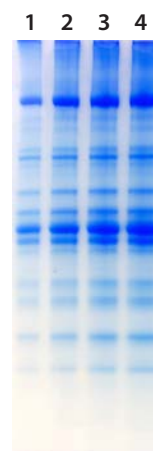
Features and Benefits

- **Durable** – resists tearing to stand up to experimental handling
- **High-Performance** – extended full length resolving gels to provide improved protein resolution for better blots
- **Excellent Compatibility** – compatible with popular gel running equipment
- **Hassle-Free** – no comb to pull, no tape to remove
- **Long Shelf Life** – up to 24 months stability from the date of manufacture
- **Fast** – run times as low as 30 minutes
- **Great Value** – gels and buffers offer a cost-saving alternative without sacrificing performance and experimental integrity

Innovative Stacking Technology

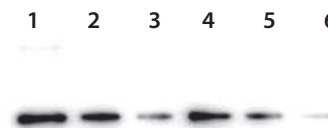
TruPAGE precast gels have proprietary stacking technology resulting in improved protein resolution and crisp bands. TruPAGE gels have large well capacity (20–35 μ L).

(A)



Chicken Muscle Extract resolved with TruPAGE and stained with InstantBlue™. Lanes: 1) 10 μ g, 2) 20 μ g, 3) 30 μ g, 4) 40 μ g.

(B)



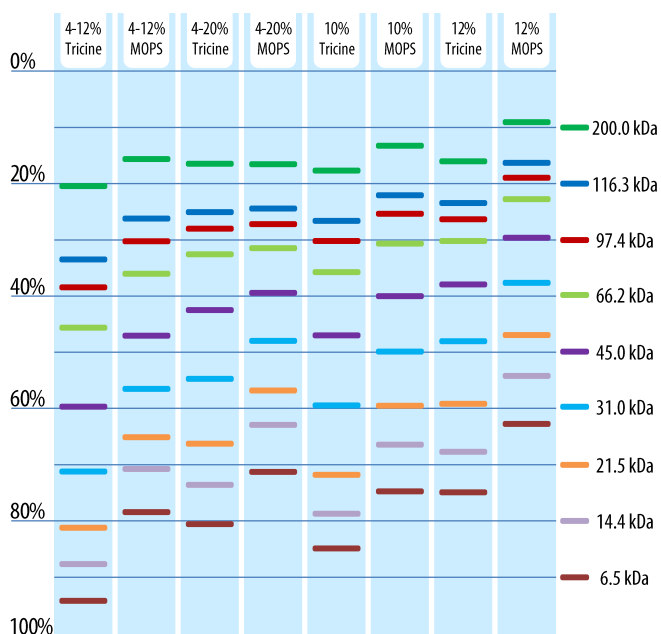
Anti-Flag Western Blot using TruPAGE to resolve samples. Lanes: 1) 1 μ g HeLa Lysate + 100 ng Carboxy-terminal FLAG-BAP (C-FLAG-BAP), 2) 0.5 μ g HeLa Lysate + 50 ng C-FLAG-BAP, 3) 0.25 μ g HeLa Lysate + 25 ng C-FLAG-BAP, 4) 100 ng C-FLAG-BAP, 5) 50 ng C-FLAG-BAP, 6) 25 ng C-FLAG-BAP.

SIGMA

LABCO L.L.C.

SIGMA-ALDRICH®

Migration Table



Conversion Chart

| Gel Form | TruPAGE™ | Equivalent to | NuPAGE® | Mini-PROTEAN TGX |
|-------------|------------------------------------|---------------|------------------------------------|------------------------------------|
| 10 × 10 cm | 10% | → | 10% | — |
| 10 × 10 cm | 12% | → | 12% | — |
| 10 × 10 cm | 4–12% | → | — | — |
| 10 × 10 cm | 4–20% | → | 4–12% | — |
| 10 × 8 cm | 10% | → | — | 10% |
| 10 × 8 cm | 12% | → | — | 12% |
| 10 × 8 cm | 4–12% | → | — | 4–15% |
| 10 × 8 cm | 4–20% | → | — | 4–20% |
| Well Volume | 12-well (35 µL) 17-well (20 µL) | → | 12-well (20 µL) 17-well (15 µL) | 12-well (20 µL) 17-well (15 µL) |

*Use specifically formulated, non-proprietary TruPAGE buffers exclusively with TruPAGE gels to ensure optimal reproducibility and consistent excellent results. TruPAGE buffer recipes are supplied online.

| Cat. No. | Buffers and Reagents |
|---------------|---|
| PCG3001-500ML | TruPAGE SDS Running Buffer, 20x, TEA-Tricine |
| PCG3003-500ML | TruPAGE SDS Express Running Buffer, 20x, MOPS |
| PCG3005-1ML | TruPAGE DTT Sample Reducer, 10x |
| PCG3007-10ML | TruPAGE Running Antioxidant, 800x |
| PCG3009-10ML | TruPAGE LDS Sample Buffer, 4x |
| PCG3011-500ML | TruPAGE Transfer Buffer, 20x |

| Cat. No. | Product Description |
|--------------|--|
| PCG2001-10EA | TruPAGE Precast Gels, 10%, 10 × 10 cm, 12-well |
| PCG2002-10EA | TruPAGE Precast Gels, 12%, 10 × 10 cm, 12-well |
| PCG2003-10EA | TruPAGE Precast Gels, 4–12%, 10 × 10 cm, 12-well |
| PCG2004-10EA | TruPAGE Precast Gels, 4–20%, 10 × 10 cm, 12-well |
| PCG2005-10EA | TruPAGE Precast Gels, 10%, 10 × 10 cm, 17-well |
| PCG2006-10EA | TruPAGE Precast Gels, 12%, 10 × 10 cm, 17-well |
| PCG2007-10EA | TruPAGE Precast Gels, 4–12%, 10 × 10 cm, 17-well |
| PCG2008-10EA | TruPAGE Precast Gels, 4–20%, 10 × 10 cm, 17-well |
| PCG2009-10EA | TruPAGE Precast Gels, 10%, 10 × 8 cm, 12-well |
| PCG2010-10EA | TruPAGE Precast Gels, 12%, 10 × 8 cm, 12-well |
| PCG2011-10EA | TruPAGE Precast Gels, 4–12%, 10 × 8 cm, 12-well |
| PCG2012-10EA | TruPAGE Precast Gels, 4–20%, 10 × 8 cm, 12-well |
| PCG2013-10EA | TruPAGE Precast Gels, 10%, 10 × 8 cm, 17-well |
| PCG2014-10EA | TruPAGE Precast Gels, 12%, 10 × 8 cm, 17-well |
| PCG2015-10EA | TruPAGE Precast Gels, 4–12%, 10 × 8 cm, 17-well |
| PCG2016-10EA | TruPAGE Precast Gels, 4–20%, 10 × 8 cm, 17-well |

| Cassette Size | Gel Box Mfg. | Compatible Boxes |
|---------------|--------------------|------------------------------------|
| 10 × 8 cm | Bio-Rad | Mini-Protean® II |
| | Bio-Rad | Mini-Protean® Tetra |
| | Hoefer | Hoefer® Tall Mighty Small™ (SE280) |
| 10 × 10 cm | Life Technologies™ | X-cell™ and Bolt® |
| | Lonza | PAGEr® Minigel Chamber |

For a complete listing of gels and corresponding buffers, visit sigma.com/trupage

Enabling Science to
Improve the Quality of Life

Order/Customer Service: sigma-aldrich.com/order
 Technical Service: sigma-aldrich.com/techservice
 Development/Custom Manufacturing Inquiries: [SAFC® safcglobal@sial.com](mailto:safcglobal@sial.com)
 Safety-related Information: sigma-aldrich.com/safetycenter

World Headquarters
3050 Spruce St.
St. Louis, MO 63103
(314) 771-5765
sigma-aldrich.com

©2015 Sigma-Aldrich Co. LLC. All rights reserved. SAFC, SIGMA and SIGMA-ALDRICH are trademarks of Sigma-Aldrich Co. LLC, registered in the US and other countries. TruPAGE is a trademark of Sigma-Aldrich Co. LLC. Bio-Rad and Mini-Protean are registered trademarks of Bio-Rad Laboratories, Inc. Hoefer is a registered trademark of Hoefer, Inc. PAGEr is a trademark of Lonza Group Ltd. Life Technologies is a trademark of Life Technologies. InstantBlue is a trademark of Expedon Protein Solutions. Tall Mighty Small is a trademark of Hoefer, Inc. XCell I is a trademark of Life Technologies. Sigma-Aldrich, Sigma and SAFC brand products are sold by affiliated Sigma-Aldrich distributors. Purchaser must determine the suitability of the product(s) for their particular use. Additional terms and conditions may apply. Please see product information on the Sigma-Aldrich website at www.sigmaaldrich.com and/or on the reverse side of the invoice or packing slip.

QJA
83592
1095